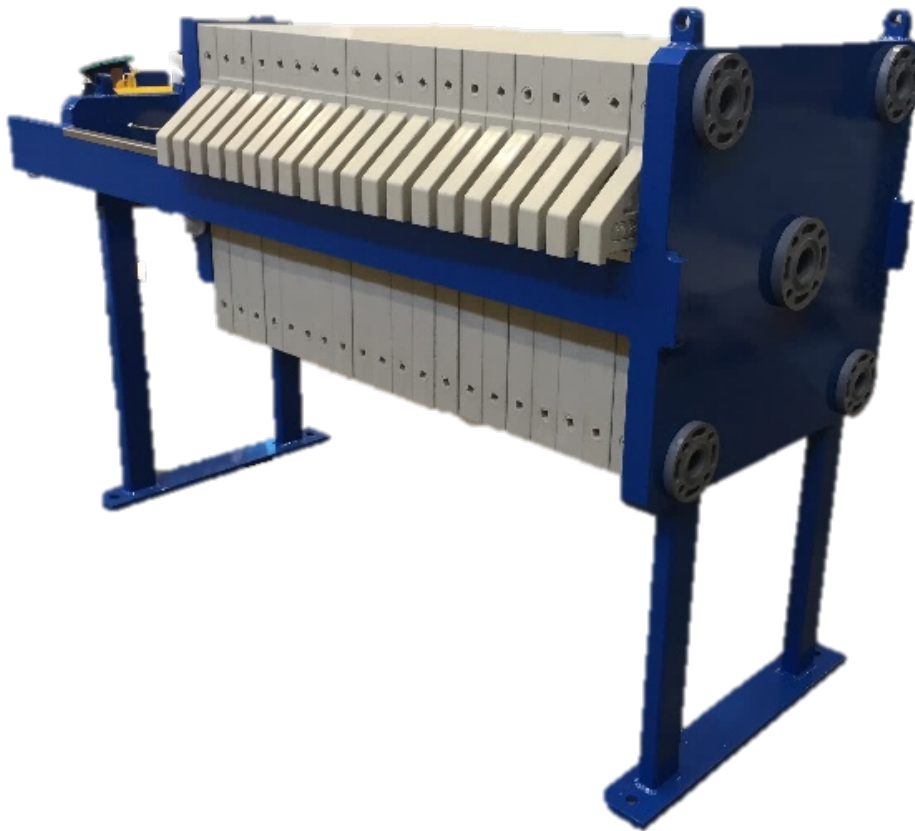


MICRONICS

MICRONICS ENGINEERED FILTRATION GROUP

Brand New, In Stock 630 mm Filter Press (6.6 ft³)



*Manually Operated Filter Press with
Recessed or CGR Filter Plates.*

Contact Us Today for Pricing: 866.481.3694

630 mm Manual Filter Press

Description: The filter elements are supported in a fabricated mild steel Filter Press framework. At one end of the filter is the feed head and at the other is the cross head containing the hydraulic closure, both with integral legs and base. The moving head (tail plate) along with the feed head will enclose the filter elements by hydraulic force provided by the power pack. Extensive use of box designs and heavy gauge plate ensure a rugged and robust framework design, ideally suited to the rigorous conditions encountered in filtration applications.

SPECIFICATIONS

Filter Capacity:	186 litres (6.57 cu.ft.)
Total Filter Area:	12.72 m ² (136.87 ft ²)
# of Chambers:	19 (RECESSED plate configuration)
Filter Plate Size:	630mm x 630mm (24.80" x 24.80")
Plate Stack Length:	1.18m (46.46")
Max Pressure:	8 bar (117.60 psig)
Feed Type:	Center
Filtrate Porting:	4 Ports

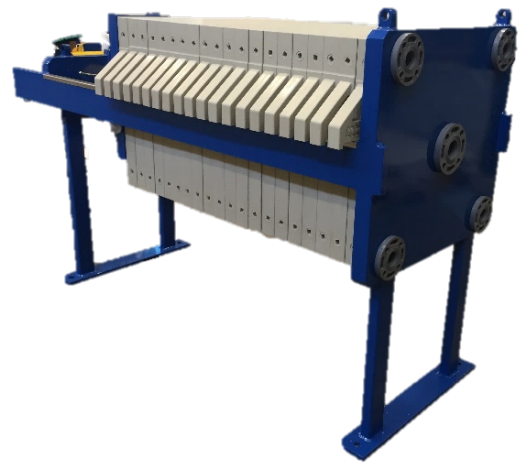


Plate Suspension: Rectangular section mild steel side bars, connecting the cross head and feed head of the framework and supporting the plate pack and moving end (tail plate). Includes stainless steel wear strips.

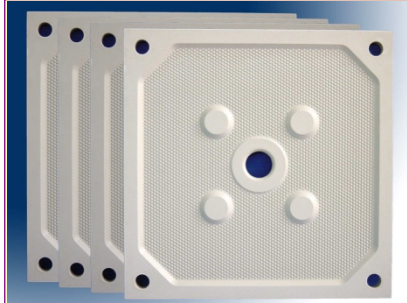
Hydraulic System: Hand hydraulic power unit with integrated oil reservoir, relief valve, pressure gauge, dump valve located at the crosshead end of the filter frame. Painted per spec.

Cylinder: Spring Return Cylinder 50 ton, 6" Stroke, Hinge to Open.

Liner Pipes: CPVC feed and filtrate liner pipes connect to the Head plate and terminate on the Feed head with 150# flanged manifold connections.

Filtrate Manifold: Valve manifold is by others.

Control System: Hydraulic hand pump. No control panel is required.



Qty: 20 Model Number: PR063-08/32 Configuration: Recessed

High performance molded polypropylene, recessed filter press plate, with pipped cloth drainage support surface. Designed for optimum filtrate discharge flows and resistance to specified operating temperature and pressure.

Size: 630 mm	Cake Thickness: 32 1.26	Area 63. dm 6.85
Pressure: 8	Plate Thickness: 59 2.32	Volume 9.8 liter 0.35
Filtrate:	Web Thickness: 27 1.06	Weight 12. kg 26.5

Item quoted not exactly as shown

Filter Cloth: One complete set [20 cloths] of filter cloths. All cloths are precision-manufactured by laser cutter. These cloths are designed for easy attachment by pushing one half of the cloth through the feed hold of the plate and securing both sides by means of grommets and ties.

Plate Shifting: Manually-shifted Filter Plates.

For Sales inquiries, please contact Erick Michaud:

Erick.Michaud@Micronicsinc.com

603.205.3310

For Engineering questions, please contact Gallagher Hogan:

Gallagher.Hogan@Micronicsinc.com

603.433.1299 x 3002

Micronics, Inc.

www.Micronicsinc.com